

Li_{1.2}Ni_{0.2}Mn_{0.6}O₂ Cathode Materials Co-Doped with La³⁺ and S²⁻ for Use in Lithium-Ion Batteries

Wencong WANG, Hiromasa HANZAWA, Ken-ichi MACHIDA, Kohei MIYAZAKI, and Takeshi ABE

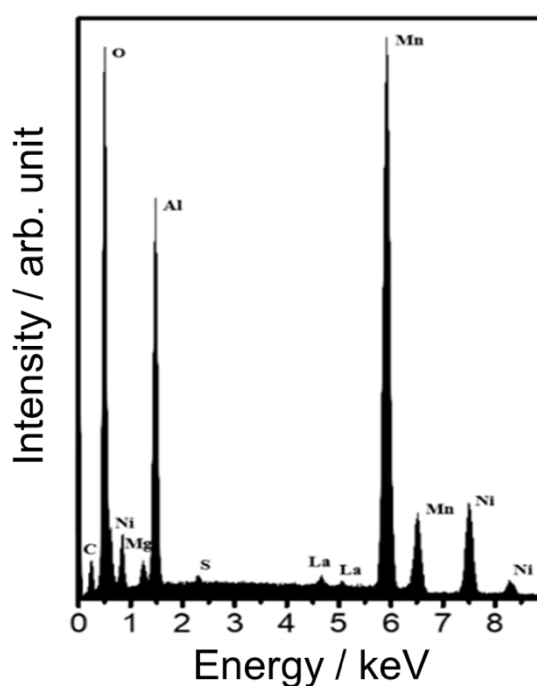


Figure S1. EDX spectrum of LNMO-0.5%La₂O₂S. Signals of Mg, C, and Al were assigned to the background signal of the sample holder.

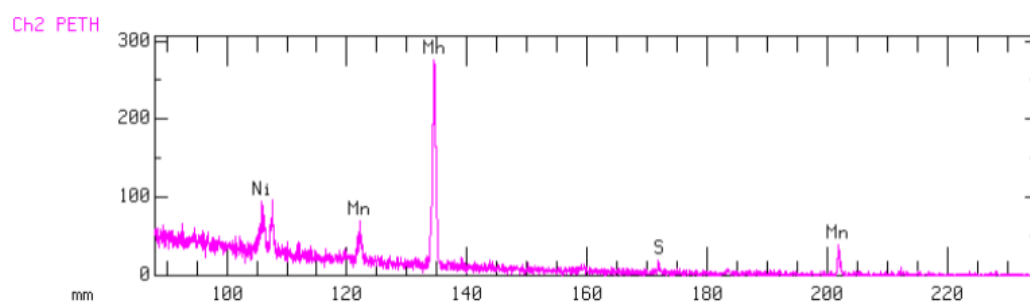


Figure S2. EPMA spectrum of LNMO-0.5%La₂O₂S.

Table S1. Chemical composition evaluated from the EDX results for the LNMO-0.5%La₂O₂S

Element	At%
Mn K	26.8
Ni K	8.78
La L	0.17
O K	64.2
S K	≈0.1

Table S2. Chemical composition evaluated from the EPMA results for LNMO-0.5%La₂O₂S

Element	EPMA results (At%)
La	0.22
O	66.24
Mn	25.22
S	0.12
Ni	8.19